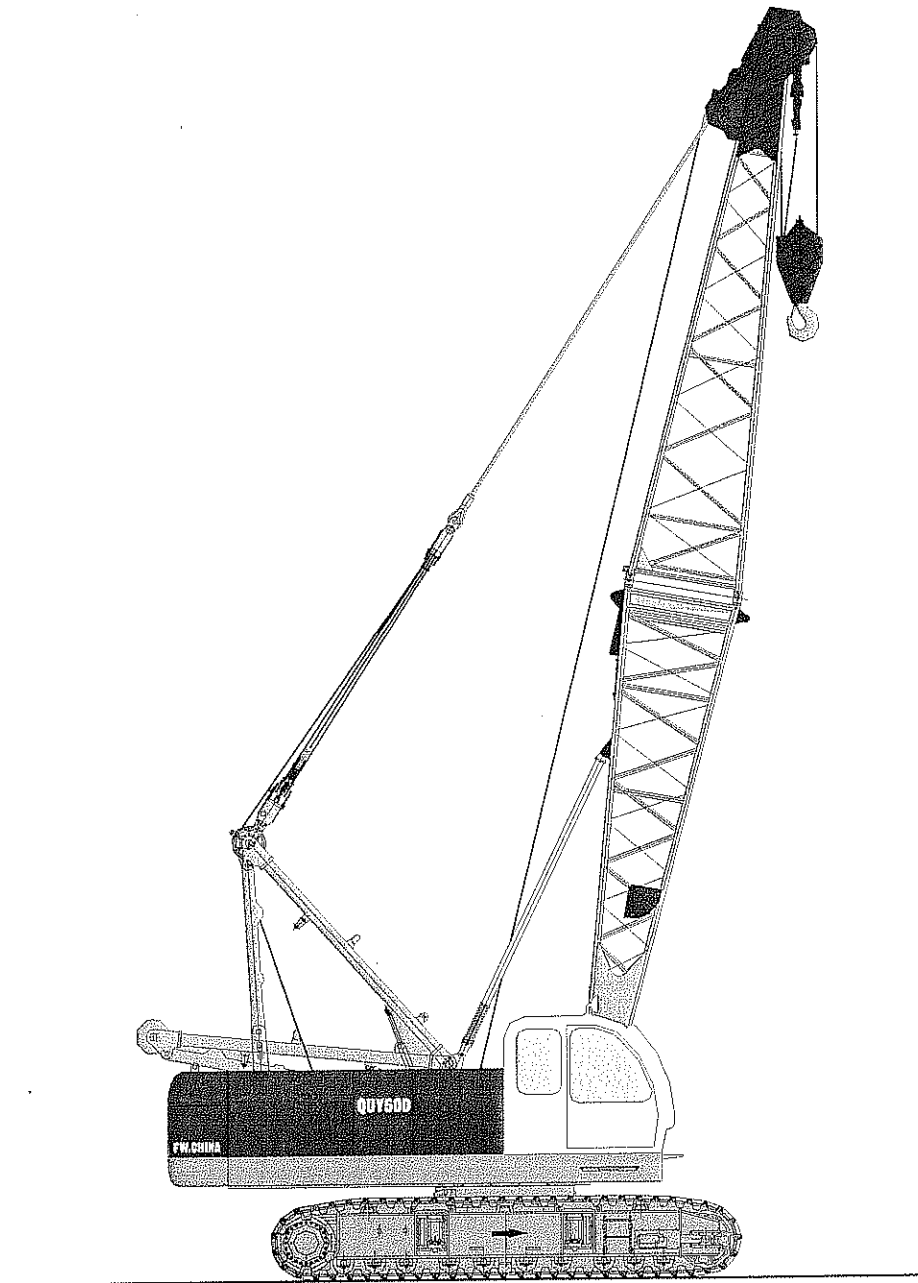


液压式履带起重机

HYDRAULIC CRAWLER CRANE

QY50D



Safety Device

Anti-two block and boom over-hoist prevention devices	Hook and boom over-hoist prevention devices are used for preventing the crane from the accidents because of the over-hoist.
Anti-two block	When the hook lifts up to certain height and touches the plumb, the limit switch shall be disengaged by the reposition spring, and then the switch cuts off the control circuit. The control relay makes the buzzer alarm and the indicator lights up. At the same time, the rise of the hook will stop automatically.
Boom over-hoist prevention device	The boom upper limit angle is controlled by moment limiter and boom upper limit switch. The crane is only mounted with boom. When the boom upper limit angle is more than 80 degree, the moment limiter will continuously alarm and send out the signal. The rise of boom will stop. At the same time, the limit switch is cut off. The boom stops rising.
Moment limiter	The device monitors the work of the crane. You can press the key to set the parameters of all working conditions. When the actual load is less than 90% of rated load, the screen shows load proportional bar in green color, and no warning alarm from the safe load indicator. When the actual load exceeds 90% of rated load while is less than 100% of rated load, the screen shows yellow color and an intermittent warning alarm sounds. When the actual load exceeds 100% of rated load while less than 105% of rated load, the monitor screen shows red color and the safe load indicator gives continuous warning alarm, and output control signal. When the actual load exceeds 105% of rated load, the monitor screen shows red color and gives out a continuous warning alarm, at the same time the safe load indicator put out control signal to stop the hoisting action of main and auxiliary hooks and boom.
The three-color load indicator	The three-color load indicator is installed on the crane in order to let the personnel on site know the load.
Anemometer	The wind speed sensor is installed on the top of boom to test wind speed. The moment limiter displays wind speed.
The brakes and locking devices	Brakes: the brakes on main and aux. winches, the brakes on main and aux, derricking winches, swing brake. Locking devices: main and auxiliary winch pawls, main derricking winch pawls and slew locking device.
Pull sensor, angle sensor	The pull sensor is installed on the pendant bar to test the pull. The angle sensor is installed on the boom foot to test boom angle.
Level gauge	The device is used for testing the angle between the machine and the ground to ensure the conditions of the ground meet the requirements.
Angle scale	The angle scale is installed on the boom foot to show the current angle of boom when the crane is lifting the load.
Three and a half layers protection device	This device is installed on main and auxiliary hoisting winches to ensure at least three and a half turns of wire ropes remain on the drum to guarantee safe operation of the machine.
Swing alarm	The buzzer alarms.
Travel alarm	The buzzer alarms.
Boom upper limit alarm device	When boom reaches upper limit, the buzzer will alarm.
Main/aux. winch limit alarm device	When main/aux. winch overhoists, the buzzer will alarm.

Specifications

Superstructure

Power device

Model: Q5B6.7 engine from Cummins
 Type: water-cooling, direct fuel injection, with turbocharger actuator
 Displacement: 6.7L
 Rated power: 127kw/2000rpm
 Max torque: 659N.m/1500rpm
 Capacity of fuel box: 250L
 Capacity of hydraulic oil box: 300L

Hydraulic system

Hydraulic system is composed of five pumps; pilot system is composed of two pumps. a group of M7 multi-way valves can realize the compound operation of traveling, derricking, swinging and hoisting simultaneously. Oil cooler independently controls the temperature. Swing system is controlled by closed -type independent hydraulic system. All winches are controlled by independent hydraulic system.

Control system

Controlled by the electrical proportion pilot; when performing lifting operation, hydraulic system power may vary depending on the power of the engine.

Electronic monitoring system

The electronic monitor has the function of troubleshooting.

Main and auxiliary winches

The main and auxiliary winches are driven by the hydraulic variable plunger motors through the planetary reduction gear. The wet-disc brake is often engaged.

Main winch

The diameter of the drum:φ460mm

The diameter of wire rope:φ20mm
 Length of wire rope:185m

Maximum rope speed:120m/min

Aux. winch

The diameter of the drum: φ460mm

The diameter of wire rope:φ20mm

Length of wire rope:120m

Maximum rope speed:120m/min

Boom derricking system

The boom derricking system is driven by the hydraulic variable plunger motor through the planetary reduction gear. The wet-disc brake is often engaged.

Diameter of the drum: φ430mm

Diameter of wire rope:φ16mm

Length of wire rope:150m

Swing system

The swing system provides 360°rotation. The swing unit is driven by hydraulic motor through planetary reduction gear.

Slewing speed:3.5r/m

Four pins are locked.

The cabin

The width of the cabin is 920mm. The cabin is equipped with air-conditioner, heater, rear view mirror, wiper and stereo. In the cabin, there are large-screen electronic monitors and moment limiter, fire extinguisher. The Gelamo chair can be adjusted.

Counterweight

Counterweight is composed of three pieces: a piece of 4.4T upper counterweight, a piece of 6.9T middle counterweight and a piece of 4.8T lower counterweight.

Undercarriage

Lower frame:

Telescopic folding structure

Track Roller

Each side has 10 track rollers. All track rollers are equipped with bushings and seals. They are coated with lubricating oil.

Track shoes

The left and right crawlers have 118 track shoes. The width of track shoe is 760mm. The tension of track shoe can be adjusted by the hydraulic jack. Adjusting the shim makes the crawler in ideal tension conditions.

Crawler drive

Independent hydraulic propel driver is built into each crawler side frame. Each drive consists of a hydraulic motor propelling a drive sprocket through a planetary reduction gear. Hydraulic motor and reduction gear are built into the crawler side frame within the shoe width.

Travel speed 0~1.3Km/H

Grade ability 40% (22°)

The attachments

The main steel pipe with high strength is imported.

Main boom

The insert section has the equal cross section. The top and foot have the variable cross sections. The boom is the lattice structure welded with steel pipes.

Length of standard boom is13~52m.

Fixed jib combination

Two kinds of angle between boom and fixed jib: 10°and 30°

Boom and fixed jib combination:

main boom:25~43m; fixed jib: 9.15m~15.2m

Hook blocks

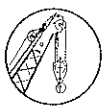
50t hook block

15t hook block

6t hook block

工况符号

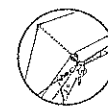
The symbols of working conditions



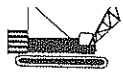
标准主臂工况
Standard Boom



加长主臂工况
Runner



固定副臂工况
Fixed Jib



臂杆组合

Boom Combination

05

固定副臂

最大起重量: 5吨x18米
最大组合: 43米+15.25米

Fixed Jib

Max. lifting capacity:
5t x 18m
Max. boom and jib combination:
43m + 15.25m

加长主臂

最大起重量: 5吨x18米
最大臂杆长度: 49米

Runner

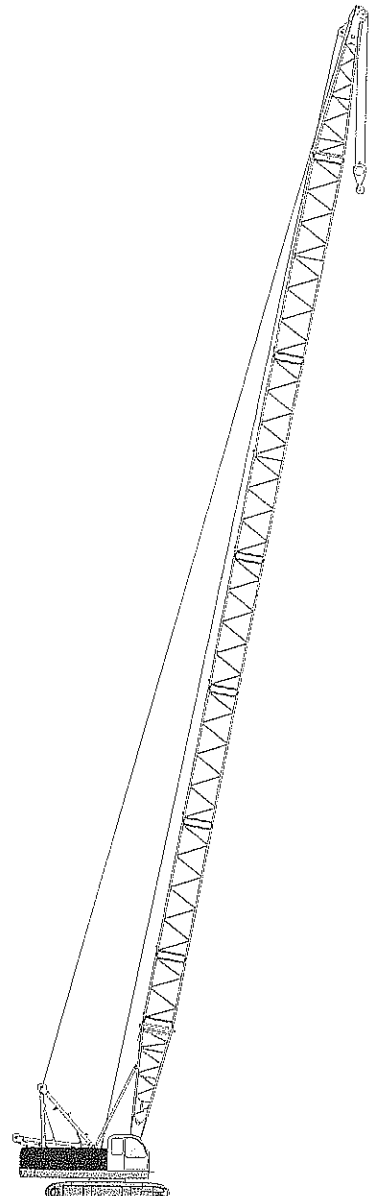
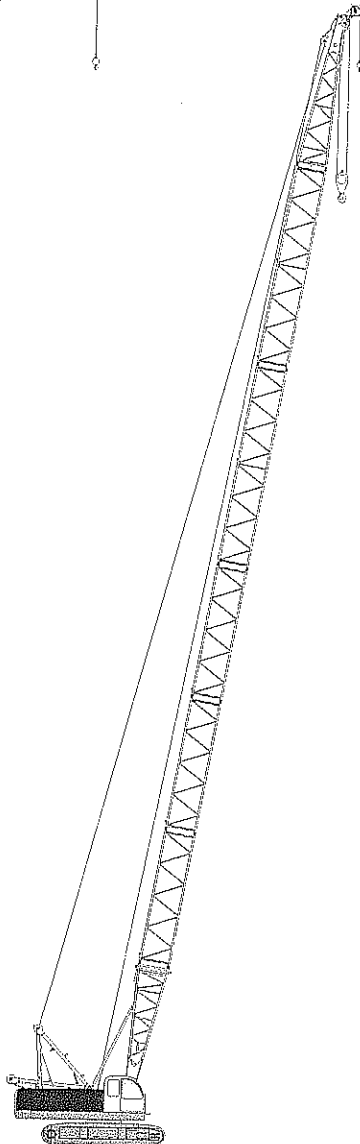
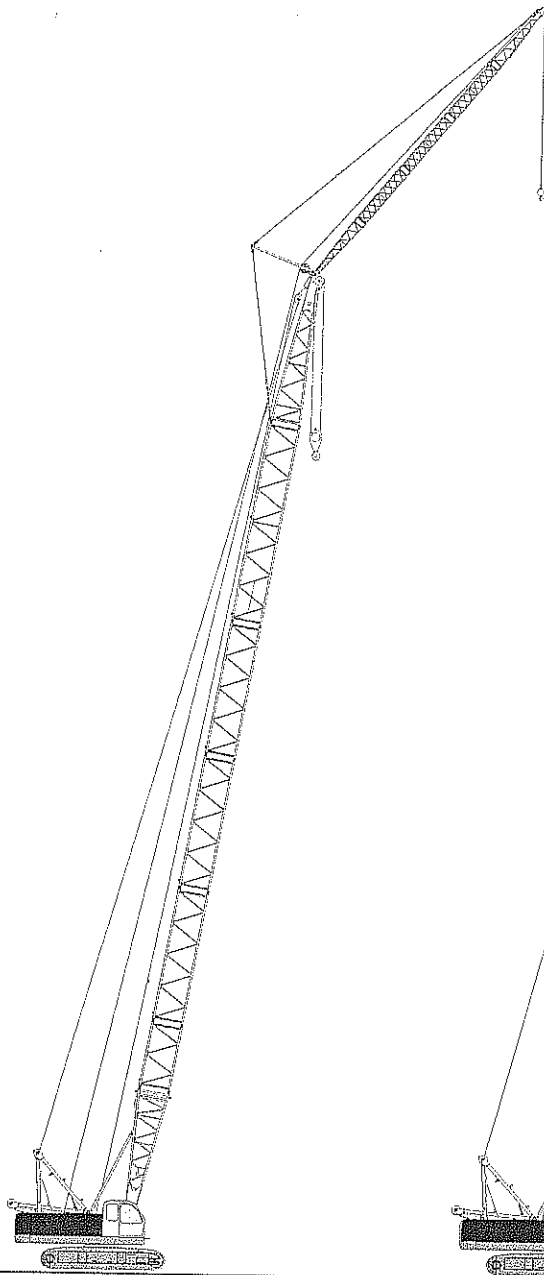
Max. lifting capacity:
5t x 18m
Max. boom length
49m

标准主臂

最大起重量: 50吨x3.7米
最大臂杆长度: 52米

Standard Boom

Max. lifting capacity:
50t x 3.7m
Max. boom length
52m



主臂 Boom
25m-43m



副臂 Fly Jib
9.15m-15.25m



主臂 Boom
13m-49m



主臂 Boom
13m-52m

BOOMER EXCAVATOR CORPORATION LTD.

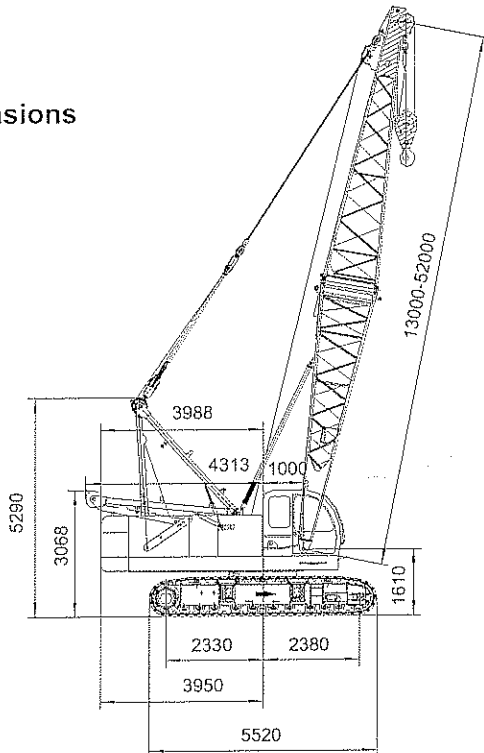
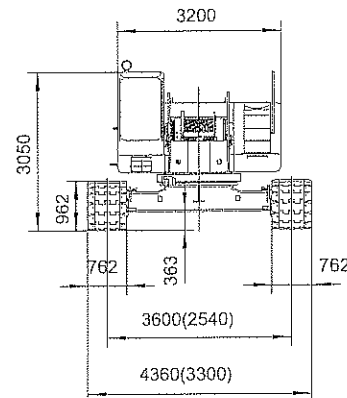
主要技术参数

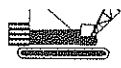
Technical Data

项 目		单 位	数 值	Descriptions	Unit	Data			
最大额定起重量		t	50	Maximum rated lifting capacity	t	50			
标准主臂长度		m	13~52	Standard boom length	m	13 ~ 52			
副臂长度		m	9.15~15.25	Jib length	m	9.15 ~ 15.25			
主臂+副臂最大长度		m	43+15.25	Max. length of main boom and fixed jib	m	43+ 15.25			
起重臂变幅角度		°	30~78	Boom angle	°	30 ~ 78			
吊钩配置		t	50/15/6	Hook blocks	t	50/15/6			
工作速度	钢丝绳速度	提升(第一层)	m/min	0~120	Working speed	Line speed	Hoist(first layer)	m/min	0 ~ 120
		下降(第一层)	m/min	0~120			Lower(first layer)	m/min	0 ~ 120
		起重臂上升	m/min	*58			Boom hoist	m/min	* 58
		起重臂下降	m/min	*58			Boom lower	m/min	* 58
	回转速度	r/min	*3.5	Swing speed	r/min	* 3.5			
	行走速度	km/h	*1.3	Travel speed	km/h	* 1.3			
主提升倍率	9	提升	10.5t(第一层)	Boom hoisting reeving	9	Single	10.5t (first layer)		
变幅倍率	12	单绳拉力		Derrick reeving	12	line pull			
爬坡能力(带基本臂, 司机室置于后方)		%	40	Grade ability(with boom foot and the cabin in the rear)	%	40			
柴油机额定输出功率/转速		KW/r/min	美国康明斯QS86.7 127/2000	Rated power output/rotation speed of diesel engine	KW/r/min	Cummins QS86.7 127/2000			
整机质量		t	49.5	Weight of whole machine	t	49.5			
接地压力		MPa	0.069	Ground pressure	MPa	0.069			
配重质量		t	16.3	Counterweight	t	16.3			
主机外形尺寸		mm	7150X3200X3200	Overall dimensions	mm	7150X3200X3200			

注:带*速度是随载荷的不同而变化。

Note :The speed may vary with load

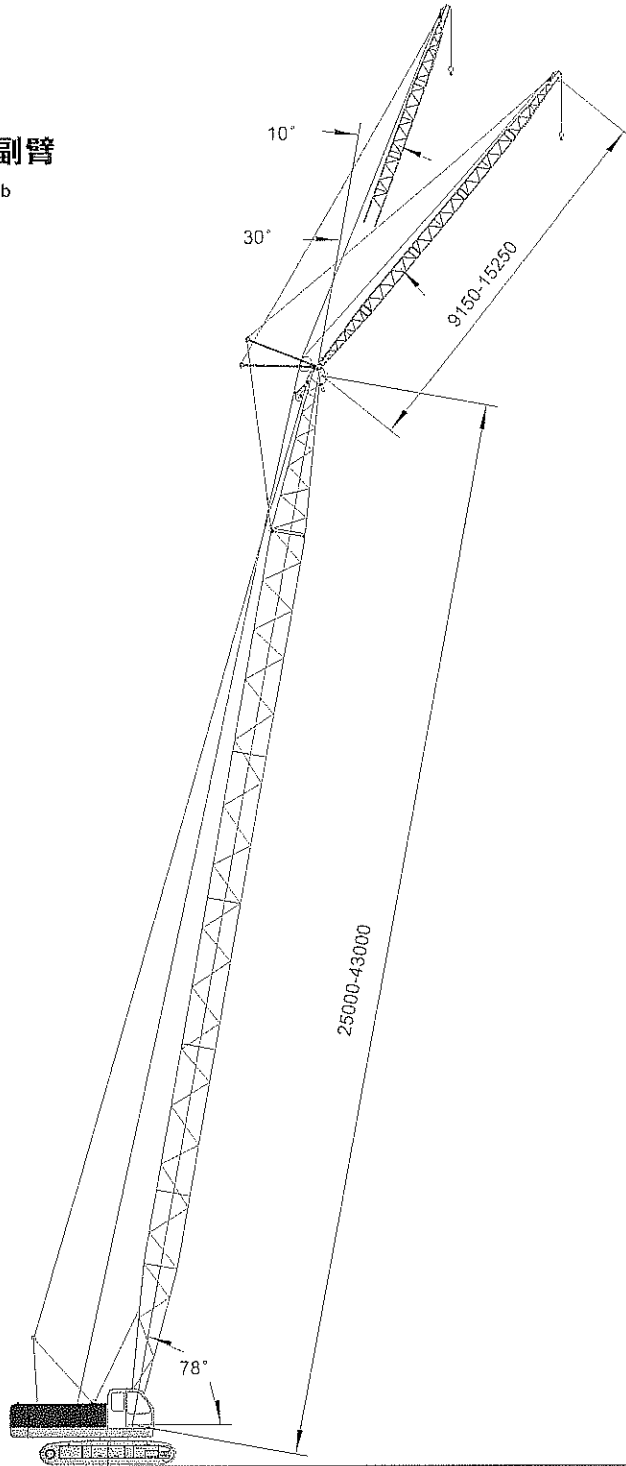
总体尺寸
Overall dimensions标准主臂
Standard boom



总体尺寸

Overall Dimensions

固定副臂
Fixed Jib



NO

07

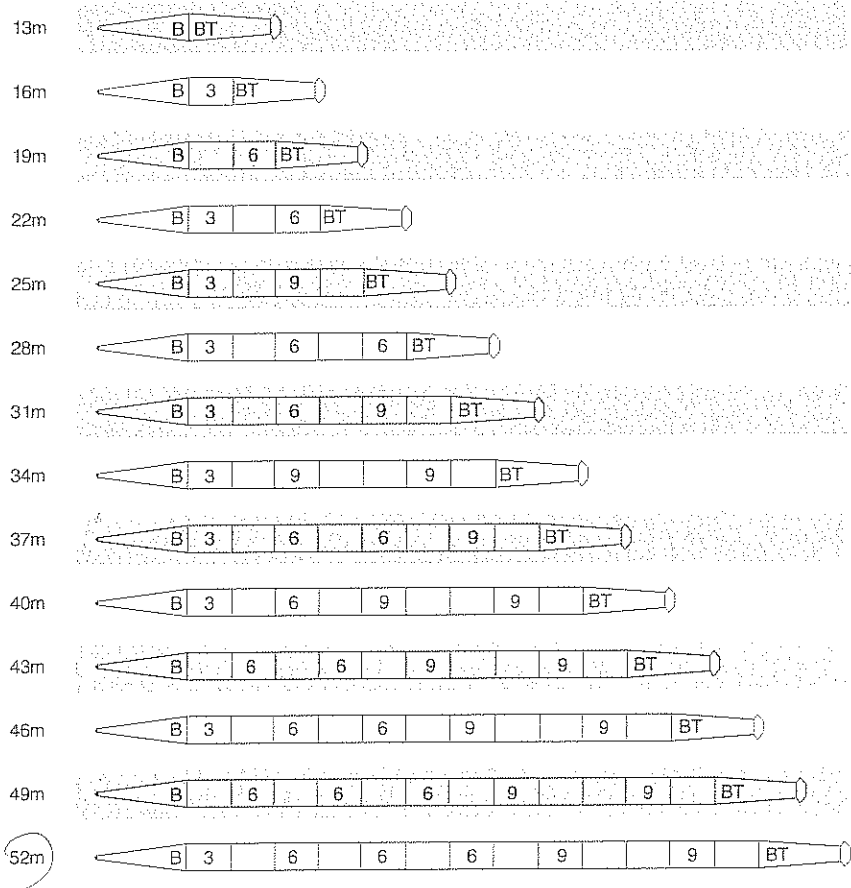
FUSHUN Excavator Corporation Ltd.

主臂和副臂组合

Boom and Jib Combinations

标准主臂工况臂节组合

Boom Combination

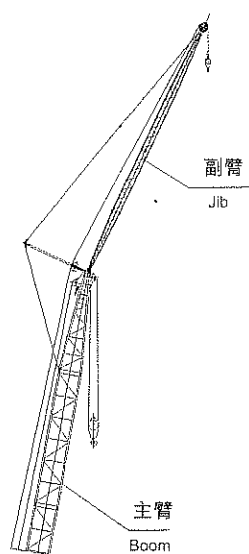


注解

符号	臂杆长度	备注
	6.5米	6.5米下节臂
	6.5米	6.5米上节臂
	3米	3米中间节臂
	6米	6米中间节臂
	9米	9米中间节臂

Note

Symbol	Length	Remarks
	6.5m	6.5m boom foot
	6.5m	6.5m boom top
	3m	3m boom insert
	6m	6m boom insert
	9m	9m boom insert



固定副臂工况臂节组合

主臂长度	副臂长度	副臂组合
_____	9.15米	
25米-43米	12.20米	
_____	15.25米	

Fixed jib combination

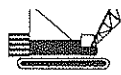
Boom length	Jib Length	Jib Combination
_____	9.15m	
37m-52m	12.20m	
_____	15.25m	

注解

符号	副臂长度	备注
	3.05米	3.05米下节臂
	3.05米	3.05米上节臂
	3.05米	3.05米中间节臂

Note

Symbol	Jib length	Remarks
	3.05m	3.05m jib foot
	3.05m	3.05m jib top
	3.05m	3.05m jib insert



标准主臂工况载荷表

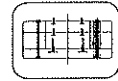
Load Chart (Standard Boom)



13m-52m



360°



16.3t

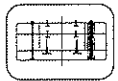
m	13	16	19	22	25	28	31	m
3.7	50							3.7
4	45.8	44.3						4
4.5	38.65	38.6	36.8					4.5
5	33.8	32.1	32	5.1/30.2				5
5.5	29.4	28.3	27.5	27.3	5.6/26.4			5.5
6	26.3	25.4	24.5	24.7	24.2	6.1/22.7	6.6/19.1	6
7	21.2	21	20.3	19.7	19.1	19.1	18.9	7
8	17.6	17.5	17.4	16.8	16.3	15.9	15.4	8
9	15.1	14.9	14.9	14.6	14.2	13.8	13.4	9
10	13.1	13	12.9	12.8	12.6	12.2	11.9	10
12	10.3	10.2	10.1	10	9.9	9.8	9.6	12
14	12.4/9.9	6.3	8.3	8.1	8.1	7.9	7.8	14
16		15.0/7.6	7	6.8	6.7	6.6	6.5	16
18			17.6/6.1	5.8	5.7	5.6	5.5	18
20				5	4.9	4.8	4.7	20
22				20.2/5.0	4.3	4.2	4.1	22
24					22.8/4.1	3.6	3.6	24
26						25.4/3.3	3.1	26
28							28.0/2.8	28
30								30
32								32
34								34



13m-52m

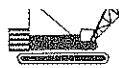


360°



16.3t

m	34	37	40	43	46	49	52	m
3.7								3.7
4								4
4.5								4.5
5								5
5.5								5.5
6								6
7	7.2/17.0	7.7/15.4						7
8	15.4	15.3	8.2/13.7	8.7/12.9				8
9	13.2	13.1	12.9	12.8	9.2/11.2	9.8/10.6		9
10	11.5	11.5	11.4	11.3	11.1	10.75	10.3/9.3	10
12	9.3	9	8.8	8.8	8.6	8.45	8.25	12
14	7.7	7.5	7.3	7.1	6.9	6.85	6.75	14
16	6.4	6.3	6.1	5.9	5.72	5.6	5.55	16
18	5.4	5.3	5.2	5.1	4.8	4.7	4.61	18
20	4.6	4.5	4.4	4.3	4.2	4	3.91	20
22	3.9	3.9	3.8	3.7	3.6	3.5	3.31	22
24	3.4	3.3	3.3	3.2	3	3	2.83	24
26	3	2.9	2.8	2.8	2.6	2.5	2.4	26
28	2.6	2.5	2.5	2.4	2.2	2.2	2	28
30	2.3	2.25	2.15	2.1	1.9	1.8	1.7	30
32	30.6/2.2	2	1.9	1.8	1.6	1.6	1.4	32
34		33.2/1.8	1.6	1.6	1.4	1.3	1.2	34



加长主臂工况载荷表

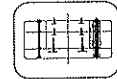
Load Chart (Runner)



13m-49m



360°

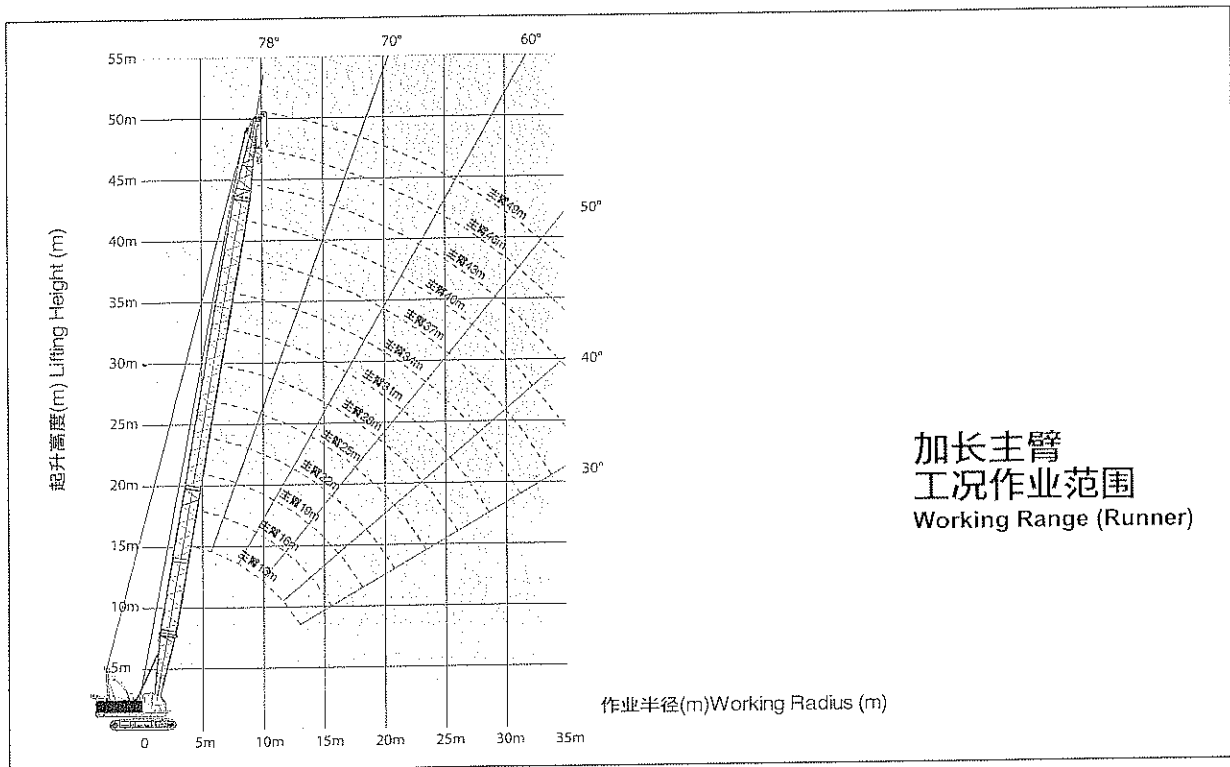


16.3t

	13	16	19	22	25	28	31	34	37	40	43	46	49	
3.7														3.7
4.3	5													4.3
4.5	5													4.5
5	5	5	5.3/5											5
5.5	5	5	5	5.8/5										5.5
6	5	5	5	5	6.3/5	6.8/5								6
7	5	5	5	5	5	5	7.4/5	7.9/5						7
8	5	5	5	5	5	5	5	5	8.4/5	8.9/5				8
9	5	5	5	5	5	5	5	5	5	5	9.5/5			9
10	5	5	5	5	5	5	5	5	5	5	5	5	10.5/5	10
12	5	5	5	5	5	5	5	5	5	5	5	5	5	12
14	13.2/5	5	5	5	5	5	5	5	5	5	5	5	5	14
16		15.8/5	5	5	5	5	5	5	5	5	17.8/5	17.6/5	17.3/5	16
18			18.4/5	19.3/5	19.1/5	18.9/5	18.6/5	18.3/5	18.3/5	5	4.9	4.8	4.7	18
20				21/5	4.7	4.6	4.5	4.4	4.4	4.3	4.2	4.1	4	20
22					4.1	4	3.9	3.8	3.8	3.7	3.6	3.5	3.4	22
24					23.6/3.9	3.5	3.4	3.3	3.3	3.2	3.1	3	2.9	24
26						26.2/3.2	3	2.8	2.8	2.75	2.7	2.5	2.4	26
28							26.8/2.55	2.6	2.5	2.4	2.35	2.2	2.1	28
30								2.3	2.25	2.15	2.05	1.9	1.8	30
32								31.3/2.25	1.9	1.85	1.75	1.6	1.5	32
34									33.9/1.75	1.6	1.5	1.3	1.2	34

1. 本表所示的额定总载荷是在水平坚硬土壤地面、非行走吊重工作时的值，额定总载荷是在倾翻载荷的78%以内。
2. 实际起重重量应从本表的额定总载荷中扣除主钩副钩等一切吊具重量后的值。
3. 起重钩质量为：6吨钩为0.181吨。

1. Capacities shown in the charts are based on the machine standing on firm and level ground. The rated total lifting capacity is within 78% of tipping load.
2. The actual lifting capacity is the rated load capacity in the table deducting the weight of hooks, slings and other load handling accessories.
3. The weight of 6t hook block: 0.181t



固定副臂工况载荷表

Load Chart (Fixed Jib)



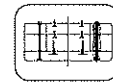
25m-43m



10° ,30°
9.15m-15.25m



360°



16.3t

m	主臂长度25米25m boom						主臂长度28米28m boom						m
	9.15		12.2		15.25		9.15		12.2		15.25		
	10°	30°	10°	30°	10°	30°	10°	30°	10°	30°	10°	30°	
9.8	5												9.8
10	5		4				5						10
12	5	4.8	4		3.3		5	4.6	4.1		3.3		12
14	5	4.6	4	3.7	3.3		5	4.5	4.1	4	3.3		14
16	5	4.5	4	3.6	3.3	3.3	5	4.4	4.1	4	3.3	3.1	16
18	5	4.5	4	3.6	3.3	3.3	5	4.3	4	4	3.3	3.1	18
20	4.7	4.4	4	3.55	3.3	3.2	4.6	4.2	4	3.9	3.3	3.1	20
22	4.1	4.2	4	3.3	3.3	3.1	4	4.1	3.7	3.8	3.3	3	22
24	3.6	3.7	3.7	3.15	3.3	3	3.5	3.6	3.6	3.7	3.3	2.95	24
26	3.2	3.3	3.3	3.1	3.1	2.9	3.1	3.2	3.2	3.3	3.2	2.8	26
28	2.9		2.9	3	3	2.6	2.8	2.8	2.8	2.9	2.9	2.65	28
30	2.6		2.6	2.7	2.7	2.5	2.5		2.5	2.6	2.6	2.55	30
32	2.3		2.4		2.4	2.2	2.2		2.3	2.4	2.3	2.4	32
34			2.2		2.2		2		2.1		2.1	2.2	34



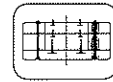
25m-43m



10° ,30°
9.15m-15.25m



360°

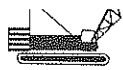


16.3t

m	主臂长度31米31m boom						主臂长度34米34m boom						m
	9.15		12.2		15.25		9.15		12.2		15.25		
	10°	30°	10°	30°	10°	30°	10°	30°	10°	30°	10°	30°	
9													9
10	5												10
12	5		4.1		3.3		5		4.1				12
14	5	4.5	4.1		3.3		5	4.5	4.1		3.3		14
16	5	4.4	4.1	4	3.3		5	4.4	4.1	4	3.3		16
18	5	4.3	4	4	3.3	3.1	5	4.3	4	4	3.3	3.1	18
20	4.5	4.2	4	3.9	3.3	3.1	4.4	4.2	4	3.9	3.3	3.1	20
22	3.9	4.1	3.7	3.8	3.3	3	3.8	4	3.7	3.8	3.3	3	22
24	3.4	3.5	3.5	3.7	3.3	2.95	3.3	3.5	3.4	3.6	3.3	2.95	24
26	3	3.1	3.1	3.2	3.1	2.8	2.9	3	3	3.1	3	2.8	26
28	2.7	2.8	2.8	2.9	2.8	2.65	2.6	2.7	2.6	2.8	2.7	2.65	28
30	2.4	2.5	2.5	2.6	2.5	2.6	2.3	2.4	2.3	2.5	2.4	2.5	30
32	2.1		2.2	2.3	2.2	2.4	2	2.1	2.1	2.2	2.1	2.3	32
34	1.9		2	2	2	2.1	1.8		1.9	2	1.9	2	34

- 1.本表所示的额定总载荷是在水平坚硬土壤地面，非行走吊重工作时的值，额定总载荷是在倾翻载荷的78%以内。
- 2.实际起重量应从本表的额定总载荷中扣除主钩副钩等一切吊具重量后的值。
- 3.副臂相对主臂的角度即倾斜角度，应从吊重状态下的角度来表示。
- 4.起重钩质量：6吨钩为0.181吨。

- 1.Capacities shown in the charts are based on the machine standing on firm and level ground. The rated total lifting capacity is within 78% of tipping load.
- 2.The actual lifting capacity is the rated load capacity in the table deducting the weight of hooks, slings and other load handling accessories.
- 3.The tilting angle is that jib is opposite to boom, which should be taken under load condition.
- 4.The weight of 6t hook block: 0.181t

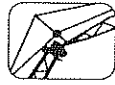


固定副臂工况载荷表

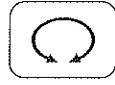
Load Chart (Fixed Jib)



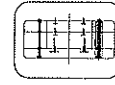
25m-43m



10° ,30°
9.15m-15.25m



360°



16.3t

m	主臂长度37米37m boom						主臂长度40米40m boom						m
	9.15		12.2		15.25		9.15		12.2		15.25		
	10'	30'	10'	30'	10'	30'	10'	30'	10'	30'	10'	30'	
9													9
10													10
12	5		4.1				5						12
14	5	4.5	4.1		3.3		5	4.5	4.1		3.3		14
16	5	4.4	4.1	4	3.3		5	4.4	4.1	4.1	3.3		16
18	5	4.3	4	4	3.3	3.1	4.8	4.3	3.9	3.7	3.2	3.1	18
20	4.3	4.2	4	3.9	3.3	3.1	4.2	3.9	3.8	3.6	3	3.1	20
22	3.7	3.9	3.7	3.7	3.3	3	3.6	3.6	3.7	3.4	3	3.1	22
24	3.2	3.4	3.3	3.4	3.3	2.8	3.2	3.3	3.2	3.1	2.9	2.9	24
26	2.8	3	2.9	3.1	3	2.75	2.8	2.9	2.8	2.9	2.9	2.7	26
28	2.5	2.6	2.6	2.7	2.6	2.65	2.4	2.5	2.5	2.6	2.5	2.5	28
30	2.2	2.3	2.3	2.4	2.3	2.5	2.1	2.2	2.2	2.3	2.2	2.3	30
32	1.9	2	2	2.1	2.1	2.2	1.9	2	1.9	2.1	2	2.1	32
34	1.7	1.8	1.8	1.9	1.8	2	1.6	1.7	1.7	1.8	1.7	1.9	34



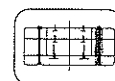
25m-43m



10° ,30°
9.15m-15.25m



360°



16.3t

m	主臂长度43米43m boom												m
	9.15		12.2		15.25								
	10'	30'	10'	30'	10'	30'	10'	30'	10'	30'	10'	30'	
9													9
10													10
12	5												12
14	5		4.1		3.2								14
16	4.8	4.2	4.1		3.2								16
18	4.4	3.9	3.9	3.5	3.2								18
20	4	3.6	3.8	3.3	3	3							20
22	3.5	3.3	3.4	3	3	2.8							22
24	3.1	3	3.1	2.8	2.8	2.6							24
26	2.7	2.7	2.8	2.6	2.7	2.4							26
28	2.3	2.5	2.4	2.3	2.4	2.2							28
30	2.1	2.2	2.1	2.1	2.2	2							30
32	1.8	1.9	1.9	1.9	1.9	1.8							32
34	1.6	1.7	1.6	1.8	1.7	1.7							34

- 1.本表所示的额定总载荷是在水平坚硬土壤地面，非行走吊重工作时的值，额定总载荷是在倾翻载荷的78%以内。
- 2.实际起重量应从本表的额定总载荷中扣除主物副物等一切吊具重量后的值。
- 3.副臂相对主臂的角度即倾斜角度，应从吊重状态下的角度来表示。
- 4.起重物质量：6吨钩为0.181吨。

- 1.Capacities shown in the charts are based on the machine standing on firm and level ground. The rated total lifting capacity is within 78% of tipping load.
- 2.The actual lifting capacity is the rated load capacity in the table deducting the weight of hooks, slings and other load handling accessories.
- 3.The tilting angle is that jib is opposite to boom, which should be taken under load condition.
- 4.The weight of 6t hook block: 0.181t

载荷表说明

Notes for Load Chart

说明

- 1.本起重机符合GB3811标准,同时又满足ISO4302,ISO4305标准。
- 2.载荷表所表示的额定总载荷值为水平坚硬地面上,理想作业条件的最大允许值。
- 3.载荷表所示的值以吨为单位,并基于倾翻力矩78%以内的值。
- 4.载荷表所示的值基于平衡负载而计算,不包括如突然停止的冲击负载,地表状况,风力负荷及操作速度等影响。如在此条件下,驾驶员必须进行减载作业。同时,载荷表中的值还要扣除如吊钩,吊具等的自重。

吊钩自重: 50吨钩……0.48吨, 15吨钩……0.295吨,
6吨钩……0.181吨。

- 5.在安装副臂或短臂时,起重机的实际起重量是将本表的值扣下表所列中以及主钩+副钩的质量,但扣除后起重量不足0.8吨时不能工作。

副臂长度	m	9.15	12.2	15.25	短臂
扣除质量	t	0.95	1.05	1.15	0.2

- 6.安装副臂时的主臂长度为25~43米。
- 7.起重机在吊重时履带架必须是扩张状态。
- 8.平衡重质量为16.3t。
- 9.侧面时的稳定值最小。

Notes

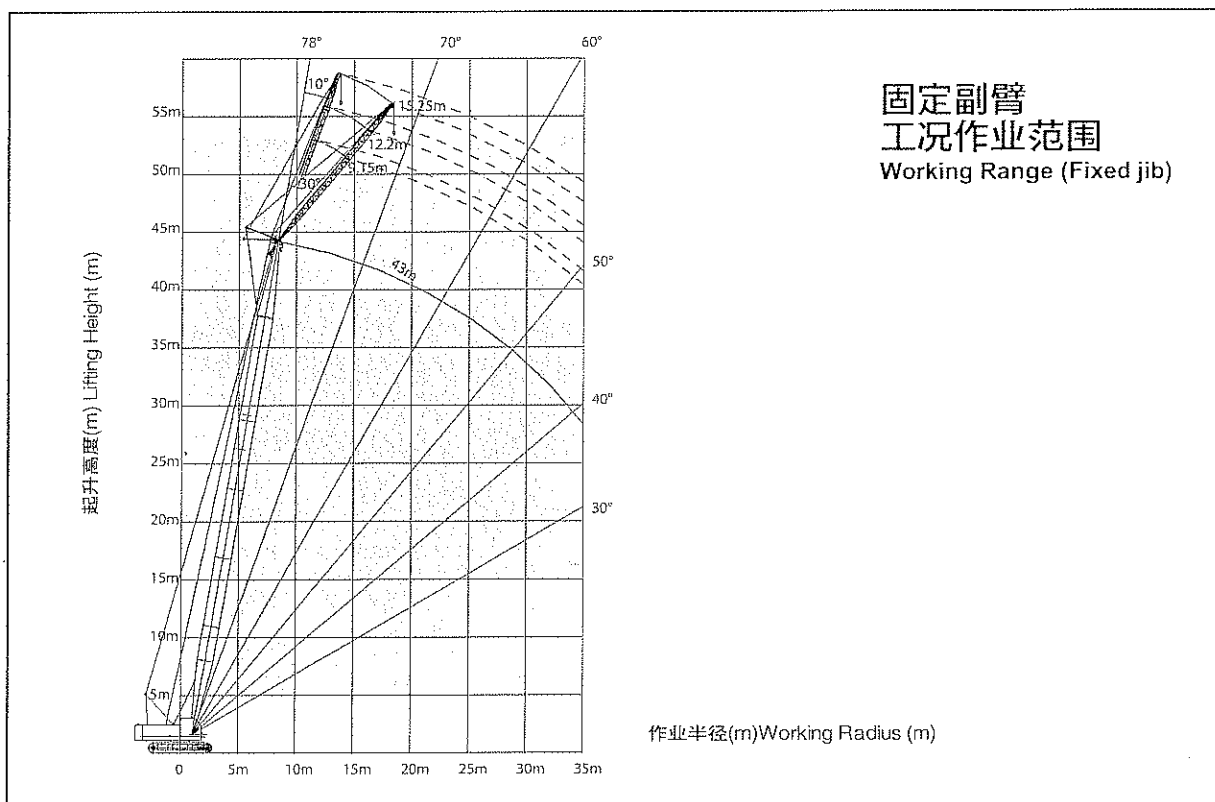
- 1.Ratings according to GB3811, ISO4302 and ISO4305.
- 2.The rated load in the table is the maximum allowed value when the crane works on the level and firm ground and under the ideal conditions.
- 3.The unit in the table is ton and the rated load capacity is 78% of tipping load.
- 4.The rated load is calculated based on stable load, not including impacting load, the conditions of ground and operating speed, so the driver should reduce corresponding load. Weight of hook and slings should be deducted from the rated capacity.

Weight of hook: 50t hook……0.48t, 15t……0.295t,
6t……0.181t

- 5.When mounted with jib or runner, the actual lifting capacity is the rated load capacity deducting the weights of main and auxiliary hooks, fixed jib or runner. The crane can not work if the capacity deducted is less than 0.8t.

Jib Length	m	9.15	12.2	15.25	Runner
Deducted mass	t	0.95	1.05	1.15	0.2

6. When mounted with jib, length of main boom is 25~43m.
7. Track frames must be extended when the crane is working.
8. The weight of counterweight is 16.3t.
9. Stability is weak at side.

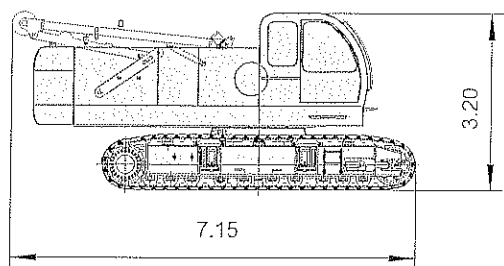




主要零部件运输尺寸

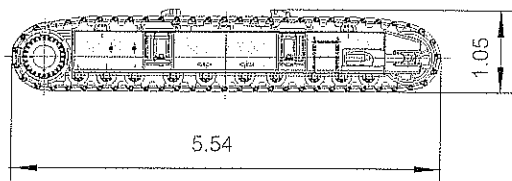
Dimensions for Transportation

尺寸单位: m Unit: m



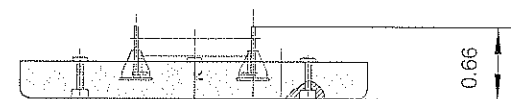
本体(不含配重)	x1
长	7.15m
宽	3.15m
高	3.20m
重量	31000kg

Carbody(not including counterweight)	x1
Length	7.15m
Width	3.15m
Height	3.20m
Weight	31000kg



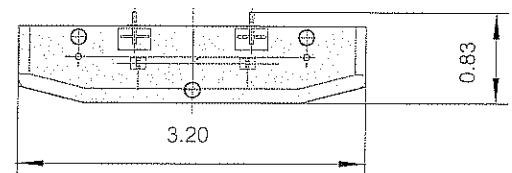
履带总成	x2
长	5.54m
宽	0.97m
高	1.05m
重量	6303kg

Crawler assy	x2
Length	5.54m
Width	0.97m
Height	1.05m
Weight	6303kg



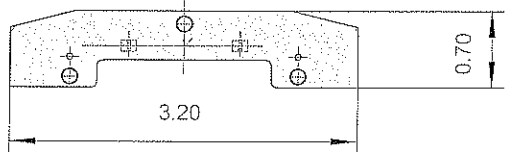
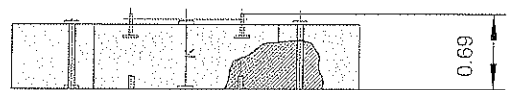
下配重	x1
长	3.20m
宽	0.83m
高	0.66m
重量	4862kg

Lower Counterweight	x1
Length	3.20m
Width	0.83m
Height	0.66m
Weight	4862kg



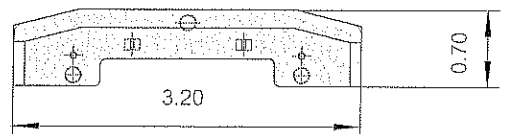
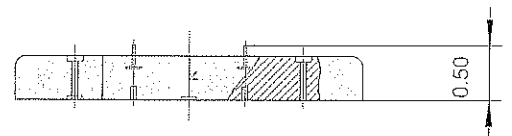
中配重	x1
长	3.20m
宽	0.70m
高	0.69m
重量	6985kg

Middle Counterweight	x1
Length	3.20m
Width	0.70m
Height	0.69m
Weight	6985kg



上配重	x1
长	3.20m
宽	0.70m
高	0.50m
重量	4412kg

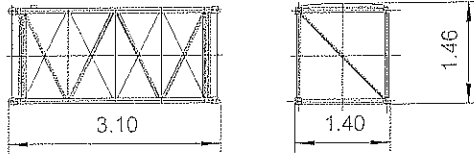
Upper Counterweight	x1
Length	3.20m
Width	0.70m
Height	0.50m
Weight	4412kg



主要零部件运输尺寸

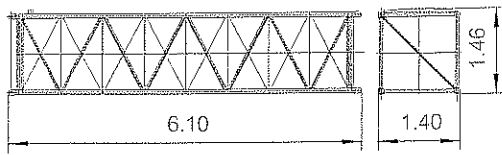
Dimensions for Transportation

尺寸单位: m Unit: m



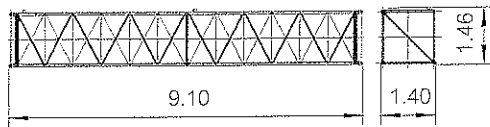
3m中间臂节	x1
长	3.10m
宽	1.4m
高	1.46m
重量	235kg

3m boom insert	x1
Length	3.10m
Width	1.4m
Height	1.46m
Weight	235kg



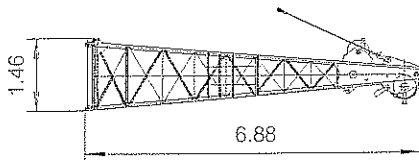
6米中间臂节	x3
长	6.10m
宽	1.40m
高	1.46m
重量	395kg

6m boom insert	x3
Length	6.10m
Width	1.40m
Height	1.46m
Weight	395kg



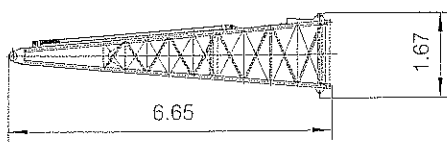
9米中间臂节	x2
长	9.10m
宽	1.40m
高	1.46m
重量	962kg

9m boom insert	x2
Length	9.10m
Width	1.40m
Height	1.46m
Weight	962kg



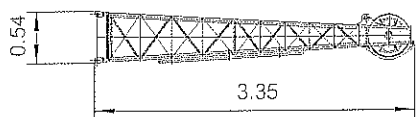
顶部臂节	x1
长	6.88m
宽	1.40m
高	1.46m
重量	962kg

Boom top	x1
Length	6.88m
Width	1.40m
Height	1.46m
Weight	962kg



基础臂节	x1
长	6.65m
宽	1.40m
高	1.67m
重量	1110kg

Boom foot	x1
Length	6.65m
Width	1.40m
Height	1.67m
Weight	1110kg



副臂顶部臂节	x1
长	3.35m
宽	0.70m
高	0.54m
重量	127kg

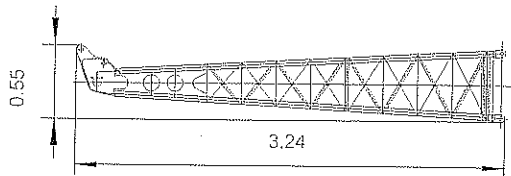
Fixed jib top	x1
Length	3.35m
Width	0.70m
Height	0.54m
Weight	127kg



主要零部件运输尺寸

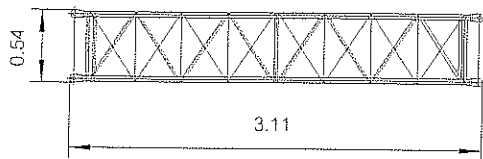
Dimensions for Transportation

尺寸单位: m Unit: m



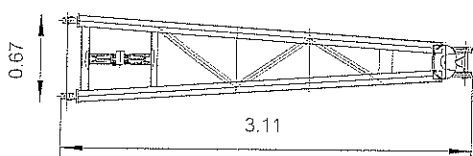
副臂基础臂节	x1
长	3.24m
宽	0.61m
高	0.55m
重量	78kg

Fixed jib foot	x1
Length	3.24m
Width	0.61m
Height	0.55m
Weight	78kg



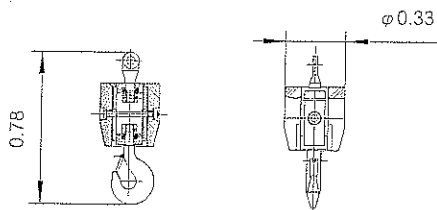
3米中间臂节	x3
长	3.11m
宽	0.61m
高	0.54m
重量	125kg

3m jib insert	x3
Length	3.11m
Width	0.61m
Height	0.54m
Weight	125kg



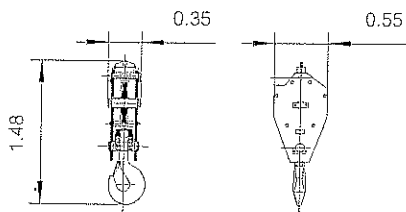
副臂撑架	x1
长	3.11m
宽	0.68m
高	0.67m
重量	164kg

Fixed jib strut	x1
Length	3.11m
Width	0.68m
Height	0.67m
Weight	164kg



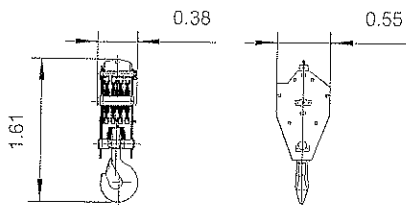
6吨吊钩	x1
长	0.78m
宽	0.33m
高	0.33m
重量	181kg

6t Hook block	x1
Length	0.78m
Width	0.33m
Height	0.33m
Weight	181kg



15吨吊钩	x1
长	1.48m
宽	0.55m
高	0.35m
重量	295kg

15t Hook block	x1
Length	1.48m
Width	0.55m
Height	0.35m
Weight	295kg



50吨吊钩	x1
长	1.61m
宽	0.55m
高	0.38m
重量	480kg

50t Hook block	x1
Length	1.61m
Width	0.55m
Height	0.38m
Weight	480kg

目录 Content

安全装置	Safety Devices	01-02 >>
详细说明	Specifications	03-04 >>
臂杆组合 主要技术参数 总体尺寸	Boom Combination Technical Data Overall Dimensions	05-07 >>
主臂和副臂组合 标准主臂工况载荷表 标准主臂工况作业范围	Boom and Jib Combinations Load Chart (Standard Boom) Working Range(Standard Boom)	08-10 >>
加长主臂工况载荷表 加长主臂工况作业范围	Load Chart (Runner) Working Range (Runner)	11 >>
固定副臂工况载荷表 载荷表说明 固定副臂工况作业范围	Load Chart(Fixed Jib) Notes for Load Chart Working Range (Fixed Jib)	12-14 >>
主要零部件运输尺寸	Dimensions for Transportation	15-20 >>

