

TR-500EX SPECIFICATIONS

SUPERSTRUCTURE

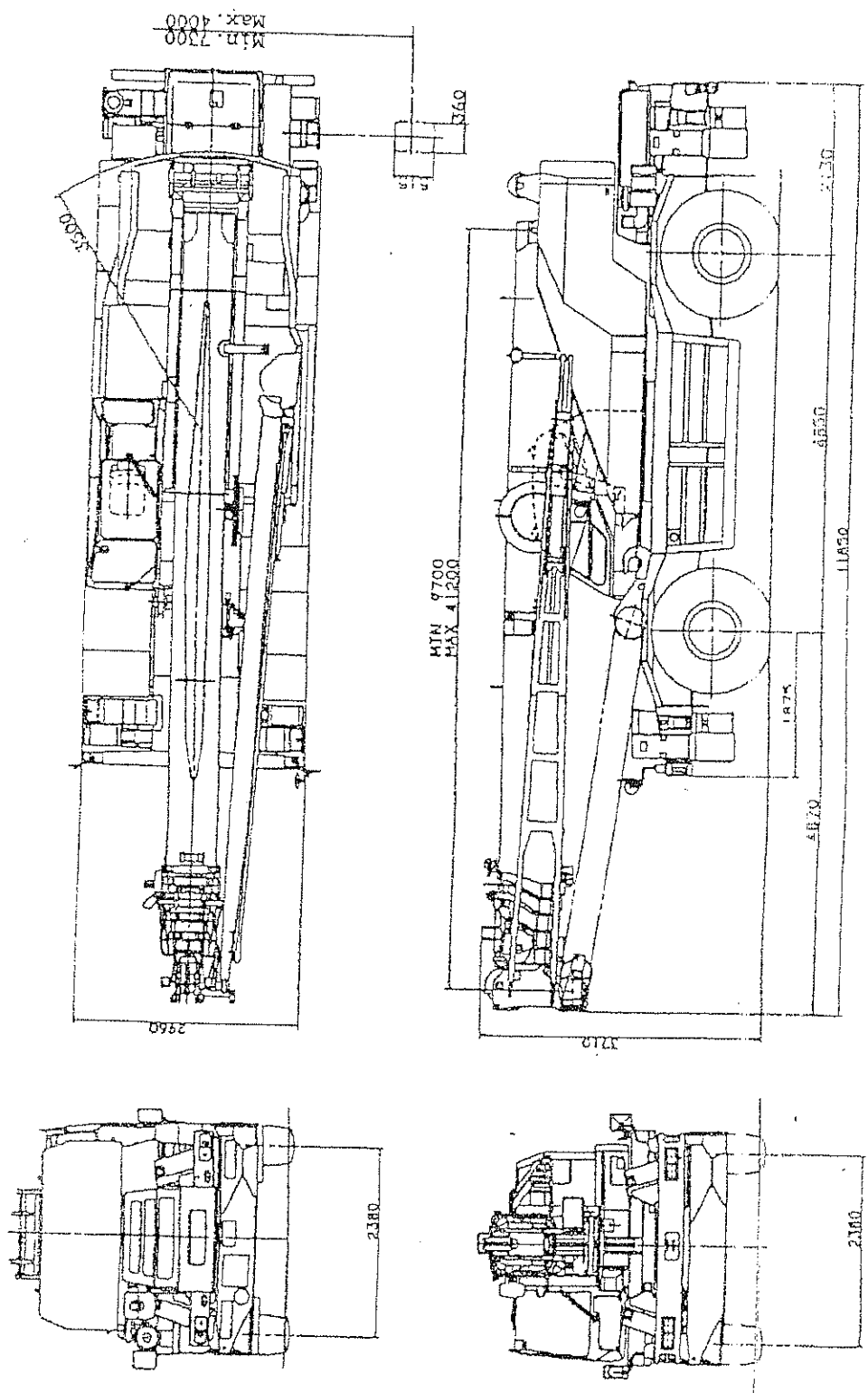
Model	: TR-500EX
Capacity	: 50,000kg at 3.5m
Boom Length	: 11.0m to 35.0m (4 sections)
Jib Length	: 9.8m to 17.1m (tilt 5°, 30°)
Single Top Length ☆	: 0.7m (offset 18°)
Boom Extending Speed	: 24.0m/153s
Boom Elevating Speed	: -1.5° to 80°/68s
Single Line Speed	
Main Winch	: 140m/min (at the 4th layer)
Aux. Winch	: 120m/min (at the 2nd layer)
Swing Speed	: 2.4r/min
Outrigger Extended Width	: 7.2m
Outrigger Float Size	: 0.50m in diameter
Max. Load on Outrigger Float	: 44,100kgf
Tail Swing Radius	: 4.12m
Wire Rope Main Winch	: 19mm diameter × 205m length
Aux. Winch	: 19mm diameter × 116m length

☆ : Denotes optional equipment

VEHICLE

Gross Vehicle Weight	: 43,200kg
Overall Length	: 13.63m
Overall Width	: 3.315m
Overall Height	: 3.78m
Wheelbase	: 3.95m
Tread	: 2.502m
Ground Clearance	: 0.59m
	(Axle)
Max. Speed	: 40km/h
Min. Turning Radius	
2-Wheel	: 11.9m
4-Wheel	: 6.7m
Drive System	: 4×4 / 4×2
Gradeability (tan θ)	: 57%
Tire Size	: 29.5-25-22PR
Tire Inflation (Travel)	: 343kPa
	{3.5kgf / cm ² }
(On Tire Operation)	: 412kPa
	{4.2kgf / cm ² }

DIMENSIONS (1/100)



ISO

TR-500EX RATED LIFTING CAPACITIES ON OUTRIGGERS MID EXTENDED 6.7m SPREAD

UNIT : ×1000kg

= OVER SIDE =

Load radius (m)	Boom Length													
	A	11.0m	A	15.0m	A	19.0m	A	23.0m	A	27.0m	A	31.0m	A	35.0m
3.0	67	50.0	73	41.2	77	37.2								
3.5	64	50.0	71	41.2	76	37.2	78	21.5						
4.0	61	48.4	69	41.2	74	35.5	77	21.5						
4.5	58	43.8	67	41.2	73	33.0	76	21.5	78	21.5				
5.0	54	39.8	65	38.9	71	31.5	74	21.5	77	21.0				
5.5	51	36.9	63	36.2	69	30.2	73	21.5	76	20.4				
6.0	47	33.9	61	33.3	68	28.8	72	21.5	75	19.9				
6.5	43	31.0	58	30.8	66	27.6	70	21.0	74	19.1	76	15.3		
7.0	39	28.8	56	27.1	64	26.4	69	20.5	73	18.3	75	14.8		
8.0	30	20.0	51	20.1	61	20.0	66	19.0	71	16.7	73	13.8	76	12.7
9.0	13	15.9	46	16.0	57	16.0	64	17.2	68	15.1	71	12.6	74	11.7
10.0			40	13.2	53	13.1	61	14.0	66	13.8	70	11.7	72	10.8
11.0			33	11.1	50	10.9	58	11.7	64	12.1	68	10.8	71	9.9
12.0			25	9.4	45	9.2	55	9.8	61	10.3	65	10.0	69	9.1
13.0					41	7.8	52	8.4	58	8.6	63	8.9	67	8.4
14.0					36	6.6	48	7.2	56	7.6	61	7.9	65	7.8
15.0					30	5.6	45	6.2	53	6.7	59	7.1	63	6.8
16.0					22	4.8	41	5.4	50	5.9	57	6.1	61	6.0
17.0					10	4.0	37	4.6	47	5.2	54	5.4	59	5.3
18.0							32	4.0	44	4.6	52	4.8	57	4.6
19.0							27	3.5	41	4.0	50	4.2	55	4.1
20.0							20	3.0	38	3.5	47	3.7	53	3.7
22.0									30	2.7	41	2.9	49	2.9
24.0									19	2.0	35	2.2	44	2.3
26.0											28	1.6	39	1.8
28.0											17	1.1	33	1.4
30.0													26	1.0
32.0													16	0.7
B														

Boom angle	35.0m Boom + 9.8m Jib			
	5° offset		30° offset	
	R	W	R	W
80°	7.8	5.60	11.2	2.80
75°	12.0	5.00	15.0	2.50
70°	15.8	4.00	18.7	2.30
65°	19.4	3.20	22.2	2.15
60°	22.9	2.60	25.4	2.00
55°	26.0	1.80	28.4	1.75
50°	29.0	1.35	31.0	1.15
45°	31.7	0.85	33.5	0.75

Boom angle	35.0m Boom + 17.1m Jib			
	5° offset		30° offset	
	R	W	R	W
80°	9.7	2.80	15.9	1.10
75°	14.4	2.30	20.3	1.00
70°	18.9	1.90	24.4	0.90
65°	23.2	1.60	28.2	0.85
60°	27.2	1.40	31.8	0.80
55°	31.0	1.20	35.1	0.75
50°	34.6	1.00	38.1	0.70
45°	37.7	0.55	40.7	0.50

R : Load radius (m)
W : Rated lifting capacity

A : Boom angle (°)
B : Minimum boom angle for indicated length (no load)

ISO

TR-500EX RATED LIFTING CAPACITIES

Load radius (m)	ON OUTRIGGERS FULLY EXTENDED 360° ROTATION													
	Boom Length													
	A	11.0m	A	15.0m	A	19.0m	A	23.0m	A	27.0m	A	31.0m	A	35.0m
3.0	67	50.0	73	41.2	77	37.2								
3.5	64	50.0	71	41.2	76	37.2	78	21.5						
4.0	61	48.4	69	41.2	74	35.5	77	21.5						
4.5	58	43.8	67	41.2	73	33.0	76	21.5	78	21.5				
5.0	54	39.8	65	38.9	71	31.5	74	21.5	77	21.0				
5.5	51	36.9	63	36.2	69	30.2	73	21.5	76	20.4				
6.0	47	33.9	61	33.3	68	28.8	72	21.5	75	19.9				
6.5	43	31.0	58	30.8	66	27.6	70	21.0	74	19.1	76	15.3		
7.0	39	28.8	56	28.6	64	26.4	69	20.5	73	18.3	75	14.8		
8.0	30	23.7	51	24.6	61	23.1	66	19.0	71	16.7	73	13.8	76	12.7
9.0	13	16.2	46	19.0	57	18.7	64	17.2	68	15.1	71	12.6	74	11.7
10.0			40	15.3	53	15.1	61	15.6	66	13.8	70	11.7	72	10.8
11.0			33	12.6	50	12.6	58	13.2	64	12.6	68	10.8	71	9.9
12.0			25	10.5	45	10.6	55	11.2	61	11.5	65	10.0	69	9.1
13.0					41	8.8	52	9.6	58	10.0	63	9.3	67	8.4
14.0					36	7.6	48	8.3	56	8.8	61	8.6	65	7.8
15.0					30	6.4	45	7.2	53	7.7	59	8.1	63	7.3
16.0					22	5.5	41	6.2	50	6.7	57	7.1	61	6.8
17.0					10	4.7	37	5.4	47	5.9	54	6.3	60	6.4
18.0							32	4.7	44	5.2	52	5.6	58	5.7
19.0							27	4.1	41	4.6	50	4.9	56	5.1
20.0							20	3.6	38	4.0	47	4.4	53	4.6
22.0									30	3.1	42	3.4	49	3.6
24.0									19	2.4	35	2.7	44	2.9
26.0											28	2.1	39	2.3
28.0											17	1.6	33	1.9
30.0													26	1.5
32.0													16	1.1
32.9													8	1.0
B	0°													

A : Boom angle (°)
 B : Minimum boom angle for indicated length (no load)

Boom angle	35.0m Boom + 9.8m Jib			
	5° offset		30° offset	
	R	W	R	W
80°	7.8	5.60	11.2	2.80
75°	12.0	5.00	15.0	2.50
70°	15.8	4.00	18.7	2.30
65°	19.4	3.20	22.2	2.10
60°	22.9	2.60	25.4	2.00
55°	26.1	2.15	28.4	1.70
50°	29.1	1.65	31.1	1.40
45°	31.8	1.10	33.6	1.00
40°	34.3	0.70	35.7	0.60

R : Load radius (m)
 W : Rated lifting capacity (t)

Load radiuses for jib operation with the boom fully extended

- NOTE : 1. Rated lifting capacity set on firm level and those below and all similar load.
 2. The mass of the jib and all similar load.
 3. Standard number of parts the following table winch and 54.5°

Boom Length (m)	1
No. of parts of line	

The lifting capacity is based on the Maximum lifting capacity of the AUTOMATIC M

ISO

TR-500EX RATED LIFTING CAPACITIES ON OUTRIGGERS MID EXTENDED 5.5m SPREAD

UNIT : × 1000kg

= OVER SIDE =

Load radius (m)	Boom Length													
	A	11.0m	A	15.0m	A	19.0m	A	23.0m	A	27.0m	A	31.0m	A	35.0m
3.0	67	50.0	73	41.2	77	37.2								
3.5	64	50.0	71	41.2	76	37.2	78	21.5						
4.0	61	48.4	69	41.2	74	35.5	77	21.5						
4.5	58	43.8	67	41.2	73	33.0	76	21.5	78	21.5				
5.0	54	39.8	65	38.9	71	31.5	74	21.5	77	21.0				
5.5	51	36.9	63	36.2	69	30.2	73	21.5	76	20.4				
6.0	47	29.7	61	25.7	68	25.9	72	21.5	75	19.9				
6.5	43	24.2	58	22.0	66	21.6	70	21.0	74	19.1	76	15.3		
7.0	39	20.5	56	19.6	64	18.7	69	19.8	73	18.3	75	14.8		
8.0	30	15.6	51	15.4	61	15.3	66	15.6	70	16.2	73	13.8	76	12.7
9.0	13	12.3	46	12.2	57	11.9	64	12.6	68	13.0	71	12.6	74	11.7
10.0			40	9.9	53	9.5	61	10.4	66	10.8	69	11.2	72	10.8
11.0			33	8.1	49	7.8	58	8.4	63	9.3	67	9.5	71	9.7
12.0			25	6.7	45	6.4	55	7.0	61	7.7	65	8.1	69	8.3
13.0					40	5.3	51	6.0	58	6.6	63	6.9	67	7.0
14.0					35	4.4	48	5.1	56	5.6	61	6.0	65	6.2
15.0					30	3.7	44	4.3	53	4.8	59	5.2	63	5.3
16.0					22	3.0	41	3.6	50	4.1	56	4.5	61	4.7
17.0					10	2.5	36	3.1	47	3.5	54	3.9	59	4.1
18.0							32	2.6	44	3.0	52	3.3	57	3.6
19.0							27	2.2	41	2.6	49	2.8	55	3.1
20.0							20	1.8	38	2.2	47	2.4	53	2.6
22.0									30	1.5	41	1.7	49	1.9
24.0									19	1.0	35	1.2	44	1.4
26.0											28	0.7	39	0.9
28.0													33	0.5
B					0°						23°			33°

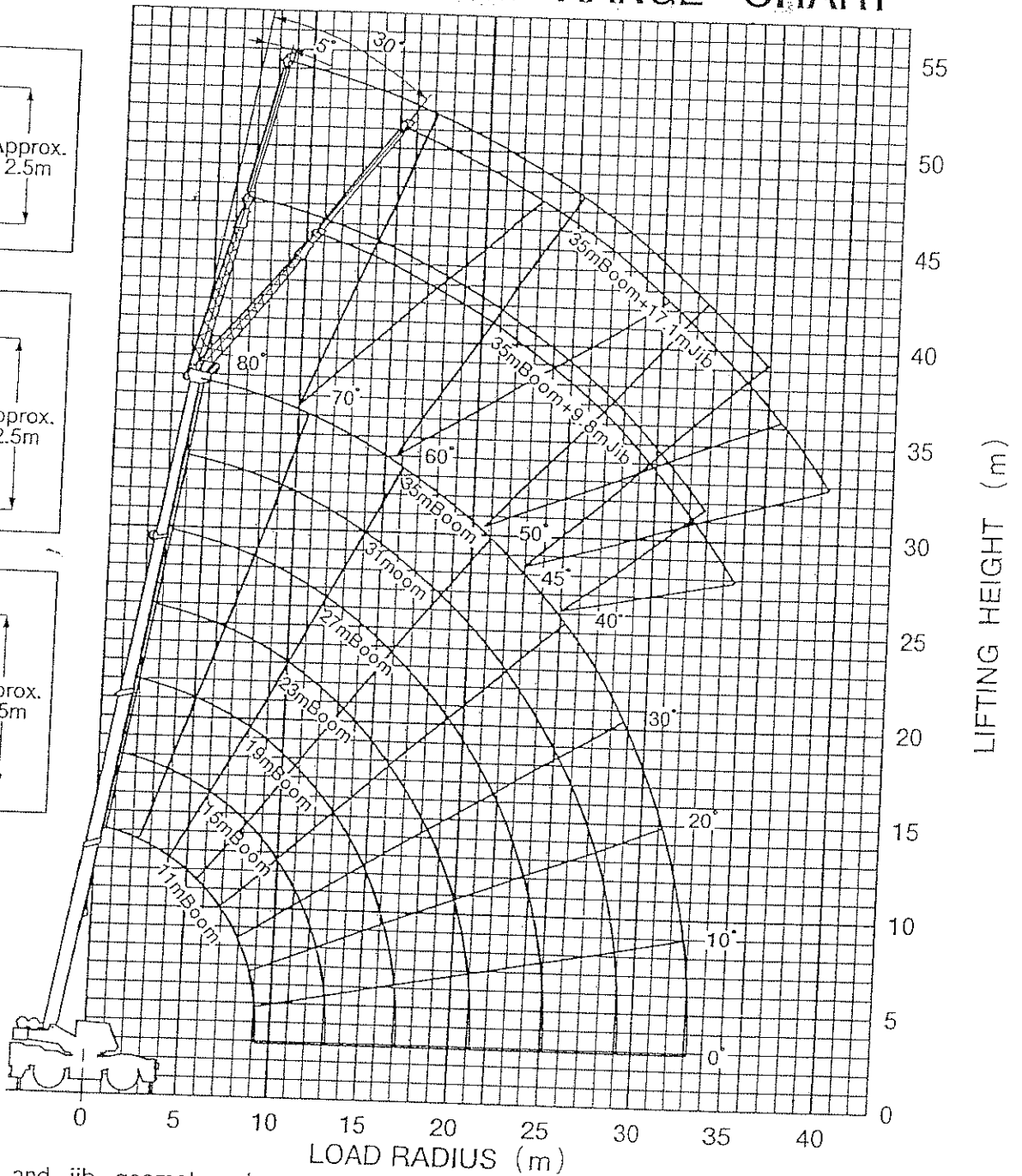
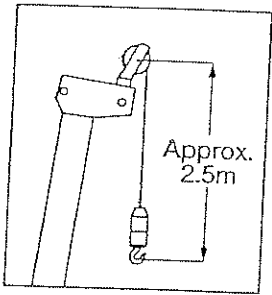
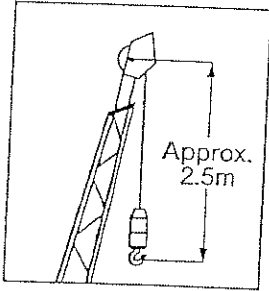
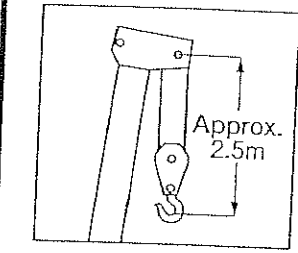
Boom angle	35.0m Boom + 9.8m Jib			
	5° offset		30° offset	
	R	W	R	W
80°	7.8	5.60	11.2	2.80
75°	12.0	5.00	15.0	2.50
70°	15.8	4.00	18.7	2.30
65°	19.4	3.10	22.2	2.15
60°	22.7	1.85	25.3	1.60
55°	25.9	1.10	28.2	0.90
50°	28.9	0.50		

Boom angle	35.0m Boom + 17.1m Jib			
	5° offset		30° offset	
	R	W	R	W
80°	9.7	2.80	15.9	1.10
75°	14.4	2.30	20.3	1.00
70°	18.9	1.90	24.4	0.90
65°	23.2	1.60	28.2	0.85
60°	27.2	1.40	31.8	0.80
55°	30.9	0.75	35.1	0.55

R : Load radius (m)
W : Rated lifting capacity

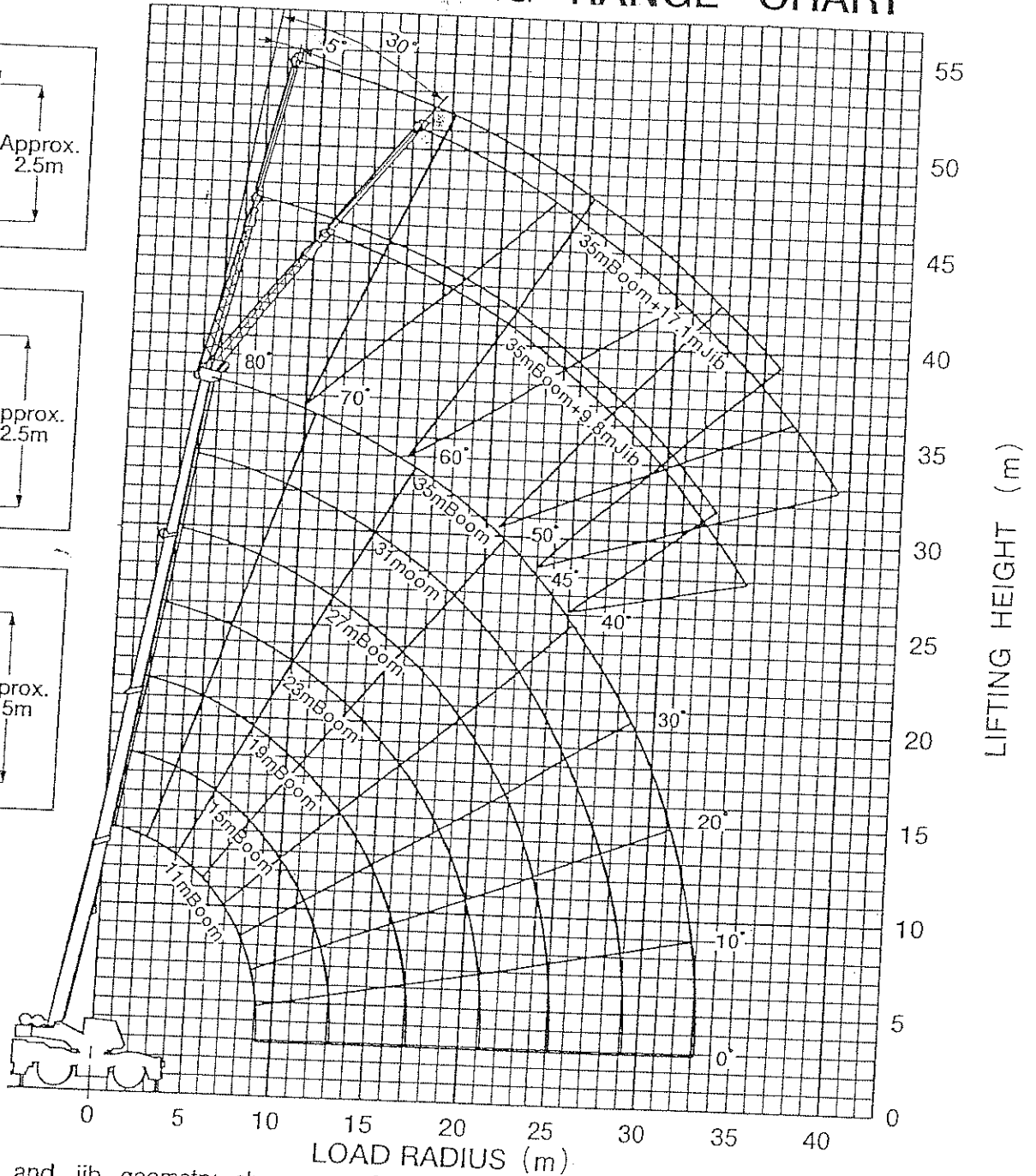
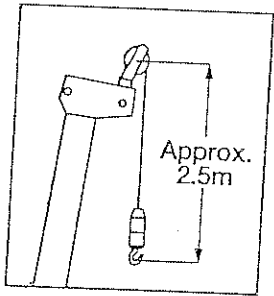
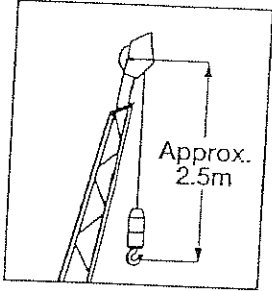
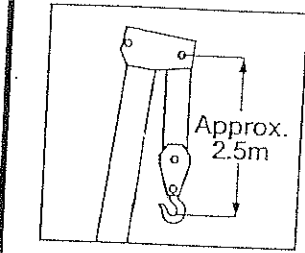
A : Boom angle (°)
B : Minimum boom angle for indicated length (no load)

TR-500EX WORKING RANGE CHART



NOTE: Boom and jib geometry shown are for unloaded condition and machine standing level on firm supporting surface. Boom deflection and subsequent radius and boom angle change must be accounted for when applying load to hook.

TR-500EX WORKING RANGE CHART



NOTE: Boom and jib geometry shown are for unloaded condition and machine standing level on firm supporting surface. Boom deflection and subsequent radius and boom angle change must be accounted for when applying load to hook.

ISO

TR-500EX RATED LIFTING CAPACITIES ON OUTRIGGERS MID EXTENDED 6.7m SPREAD

UNIT : × 1000kg

= OVER SIDE =

Load radius (m)	Boom Length													
	A	11.0m	A	15.0m	A	19.0m	A	23.0m	A	27.0m	A	31.0m	A	35.0m
3.0	67	50.0	73	41.2	77	37.2								
3.5	64	50.0	71	41.2	76	37.2	78	21.5						
4.0	61	48.4	69	41.2	74	35.5	77	21.5						
4.5	58	43.8	67	41.2	73	33.0	76	21.5	78	21.5				
5.0	54	39.8	65	38.9	71	31.5	74	21.5	77	21.0				
5.5	51	36.9	63	36.2	69	30.2	73	21.5	76	20.4				
6.0	47	33.9	61	33.3	68	28.8	72	21.5	75	19.9				
6.5	43	31.0	58	30.8	66	27.6	70	21.0	74	19.1	76	15.3		
7.0	39	28.8	56	27.1	64	26.4	69	20.5	73	18.3	75	14.8		
8.0	30	20.0	51	20.1	61	20.0	66	19.0	71	16.7	73	13.8	76	12.7
9.0	13	15.9	46	16.0	57	16.0	64	17.2	68	15.1	71	12.6	74	11.7
10.0			40	13.2	53	13.1	61	14.0	66	13.8	70	11.7	72	10.8
11.0			33	11.1	50	10.9	58	11.7	64	12.1	68	10.8	71	9.9
12.0			25	9.4	45	9.2	55	9.8	61	10.3	65	10.0	69	9.1
13.0					41	7.8	52	8.4	58	8.6	63	8.9	67	8.4
14.0					36	6.6	48	7.2	56	7.6	61	7.9	65	7.8
15.0					30	5.6	45	6.2	53	6.7	59	7.1	63	6.8
16.0					22	4.8	41	5.4	50	5.9	57	6.1	61	6.0
17.0					10	4.0	37	4.6	47	5.2	54	5.4	59	5.3
18.0							32	4.0	44	4.6	52	4.8	57	4.6
19.0							27	3.5	41	4.0	50	4.2	55	4.1
20.0							20	3.0	38	3.5	47	3.7	53	3.7
22.0									30	2.7	41	2.9	49	2.9
24.0									19	2.0	35	2.2	44	2.3
26.0											28	1.6	39	1.8
28.0											17	1.1	33	1.4
30.0													26	1.0
32.0													16	0.7
B														7°

Boom angle	35.0m Boom + 9.8m Jib			
	5° offset		30° offset	
	R	W	R	W
80°	7.8	5.60	11.2	2.80
75°	12.0	5.00	15.0	2.50
70°	15.8	4.00	18.7	2.30
65°	19.4	3.20	22.2	2.15
60°	22.9	2.60	25.4	2.00
55°	26.0	1.80	28.4	1.75
50°	29.0	1.35	31.0	1.15
45°	31.7	0.85	33.5	0.75

Boom angle	35.0m Boom + 17.1m Jib			
	5° offset		30° offset	
	R	W	R	W
80°	9.7	2.80	15.9	1.10
75°	14.4	2.30	20.3	1.00
70°	18.9	1.90	24.4	0.90
65°	23.2	1.60	28.2	0.85
60°	27.2	1.40	31.8	0.80
55°	31.0	1.20	35.1	0.75
50°	34.6	1.00	38.1	0.70
45°	37.7	0.55	40.7	0.50

R : Load radius (m)
W : Rated lifting capacity

A : Boom angle (°)
B : Minimum boom angle for indicated length (no load)

ISO

TR-500EX RATED LIFTING CAPACITIES ON OUTRIGGERS MID EXTENDED 6.7m SPREAD

UNIT : ×1000kg

= OVER SIDE =

Load radius (m)	Boom Length													
	A	11.0m	A	15.0m	A	19.0m	A	23.0m	A	27.0m	A	31.0m	A	35.0m
3.0	67	50.0	73	41.2	77	37.2								
3.5	64	50.0	71	41.2	76	37.2	78	21.5						
4.0	61	48.4	69	41.2	74	35.5	77	21.5						
4.5	58	43.8	67	41.2	73	33.0	76	21.5	78	21.5				
5.0	54	39.8	65	38.9	71	31.5	74	21.5	77	21.0				
5.5	51	36.9	63	36.2	69	30.2	73	21.5	76	20.4				
6.0	47	33.9	61	33.3	68	28.8	72	21.5	75	19.9				
6.5	43	31.0	58	30.8	66	27.6	70	21.0	74	19.1	76	15.3		
7.0	39	28.8	56	27.1	64	26.4	69	20.5	73	18.3	75	14.8		
8.0	30	20.0	51	20.1	61	20.0	66	19.0	71	16.7	73	13.8	76	12.7
9.0	13	15.9	46	16.0	57	16.0	64	17.2	68	15.1	71	12.6	74	11.7
10.0			40	13.2	53	13.1	61	14.0	66	13.8	70	11.7	72	10.8
11.0			33	11.1	50	10.9	58	11.7	64	12.1	68	10.8	71	9.9
12.0			25	9.4	45	9.2	55	9.8	61	10.3	65	10.0	69	9.1
13.0					41	7.8	52	8.4	58	8.6	63	8.9	67	8.4
14.0					36	6.6	48	7.2	56	7.6	61	7.9	65	7.8
15.0					30	5.6	45	6.2	53	6.7	59	7.1	63	6.8
16.0					22	4.8	41	5.4	50	5.9	57	6.1	61	6.0
17.0					10	4.0	37	4.6	47	5.2	54	5.4	59	5.3
18.0							32	4.0	44	4.6	52	4.8	57	4.6
19.0							27	3.5	41	4.0	50	4.2	55	4.1
20.0							20	3.0	38	3.5	47	3.7	53	3.7
22.0									30	2.7	41	2.9	49	2.9
24.0									19	2.0	35	2.2	44	2.3
26.0											28	1.6	39	1.8
28.0											17	1.1	33	1.4
30.0													26	1.0
32.0													16	0.7
B														

Boom angle	35.0m Boom + 9.8m Jib			
	5° offset		30° offset	
	R	W	R	W
80°	7.8	5.60	11.2	2.80
75°	12.0	5.00	15.0	2.50
70°	15.8	4.00	18.7	2.30
65°	19.4	3.20	22.2	2.15
60°	22.9	2.60	25.4	2.00
55°	26.0	1.80	28.4	1.75
50°	29.0	1.35	31.0	1.15
45°	31.7	0.85	33.5	0.75

Boom angle	35.0m Boom + 17.1m Jib			
	5° offset		30° offset	
	R	W	R	W
80°	9.7	2.80	15.9	1.10
75°	14.4	2.30	20.3	1.00
70°	18.9	1.90	24.4	0.90
65°	23.2	1.60	28.2	0.85
60°	27.2	1.40	31.8	0.80
55°	31.0	1.20	35.1	0.75
50°	34.6	1.00	38.1	0.70
45°	37.7	0.55	40.7	0.50

R : Load radius (m)
W : Rated lifting capacity

A : Boom angle (°)
B : Minimum boom angle for indicated length (no load)

ISO

TR-500EX RATED LIFTING CAPACITIES ON OUTRIGGERS MID EXTENDED 5.5m SPREAD

UNIT : × 1000kg

= OVER SIDE =

Load radius (m)	Boom Length													
	A	11.0m	A	15.0m	A	19.0m	A	23.0m	A	27.0m	A	31.0m	A	35.0m
3.0	67	50.0	73	41.2	77	37.2								
3.5	64	50.0	71	41.2	76	37.2	78	21.5						
4.0	61	48.4	69	41.2	74	35.5	77	21.5						
4.5	58	43.8	67	41.2	73	33.0	76	21.5	78	21.5				
5.0	54	39.8	65	38.9	71	31.5	74	21.5	77	21.0				
5.5	51	36.9	63	36.2	69	30.2	73	21.5	76	20.4				
6.0	47	29.7	61	25.7	68	25.9	72	21.5	75	19.9				
6.5	43	24.2	58	22.0	66	21.6	70	21.0	74	19.1	76	15.3		
7.0	39	20.5	56	19.6	64	18.7	69	19.8	73	18.3	75	14.8		
8.0	30	15.6	51	15.4	61	15.3	66	15.6	70	16.2	73	13.8	76	12.7
9.0	13	12.3	46	12.2	57	11.9	64	12.6	68	13.0	71	12.6	74	11.7
10.0			40	9.9	53	9.5	61	10.4	66	10.8	69	11.2	72	10.8
11.0			33	8.1	49	7.8	58	8.4	63	9.3	67	9.5	71	9.7
12.0			25	6.7	45	6.4	55	7.0	61	7.7	65	8.1	69	8.3
13.0					40	5.3	51	6.0	58	6.6	63	6.9	67	7.0
14.0					35	4.4	48	5.1	56	5.6	61	6.0	65	6.2
15.0					30	3.7	44	4.3	53	4.8	59	5.2	63	5.3
16.0					22	3.0	41	3.6	50	4.1	56	4.5	61	4.7
17.0					10	2.5	36	3.1	47	3.5	54	3.9	59	4.1
18.0							32	2.6	44	3.0	52	3.3	57	3.6
19.0							27	2.2	41	2.6	49	2.8	55	3.1
20.0							20	1.8	38	2.2	47	2.4	53	2.6
22.0									30	1.5	41	1.7	49	1.9
24.0									19	1.0	35	1.2	44	1.4
26.0											28	0.7	39	0.9
28.0													33	0.5
B					0°						23°			33°

Boom angle	35.0m Boom + 9.8m Jib			
	5° offset		30° offset	
	R	W	R	W
80°	7.8	5.60	11.2	2.80
75°	12.0	5.00	15.0	2.50
70°	15.8	4.00	18.7	2.30
65°	19.4	3.10	22.2	2.15
60°	22.7	1.85	25.3	1.60
55°	25.9	1.10	28.2	0.90
50°	28.9	0.50		

Boom angle	35.0m Boom + 17.1m Jib			
	5° offset		30° offset	
	R	W	R	W
80°	9.7	2.80	15.9	1.10
75°	14.4	2.30	20.3	1.00
70°	18.9	1.90	24.4	0.90
65°	23.2	1.60	28.2	0.85
60°	27.2	1.40	31.8	0.80
55°	30.9	0.75	35.1	0.55

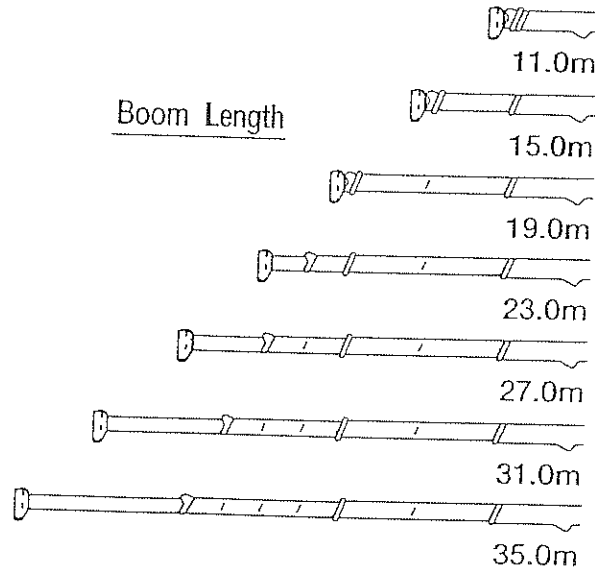
R : Load radius (m)
W : Rated lifting capacity

A : Boom angle (°)
B : Minimum boom angle for indicated length (no load)

ACITIES

UNIT : ×1000kg

° ROTATION							
30.0m Boom + 9.8m Jib				35.0m Boom + 17.1m Jib			
° offset		30° offset		5° offset		30° offset	
R	W	R	W	R	W	R	W
2.8	5.60	11.2	2.80	9.7	2.80	15.9	1.10
2.0	5.00	15.0	2.50	14.4	2.30	20.3	1.00
1.8	4.00	18.7	2.30	18.9	1.90	24.4	0.90
1.4	3.20	22.2	2.15	23.2	1.60	28.2	0.85
0.9	2.60	25.4	2.00	27.2	1.40	31.8	0.80
0.1	2.15	28.4	1.75	31.0	1.20	35.1	0.75
0.1	1.65	31.1	1.45	34.6	1.05	38.1	0.70
0.8	1.10	33.6	1.05	37.8	0.80	40.8	0.65
0.3	0.70	35.7	0.65				



R : Load radius (m)
W : Rated lifting capacity

Radiuses for jib operation are given for reference
boom fully extended to 35.0m.

Rated lifting capacities shown in the table are based on condition that crane is set on firm level surface. Those above blue lines are based on crane strength and those below, on crane stability.

The mass of the hook (500kg for 50t capacity, 150kg for 5.6t capacity) , slings and all similarly used load handling devices must be added to the weight of the load.

Standard number of parts of line for outrigger operation should be according to the following table. Load per line should not surpass 52.9kN {5,400kgf} for main winch and 54.9kN {5,600kgf} for auxiliary winch.

Boom Length (m)	11.0	11.0 to 19.0	19.0 to 35.0	Single top Jib
No. of parts of line	10	8	4	1

The lifting capacity data stored in the AUTOMATIC MOMENT LIMITER (AML-L) is based on the standard number of parts of line listed in the chart. Maximum lifting capacity is restricted by the number of parts of line of AUTOMATIC MOMENT LIMITER (AML-L).